

# MultiTac Connector

## YC SERIES

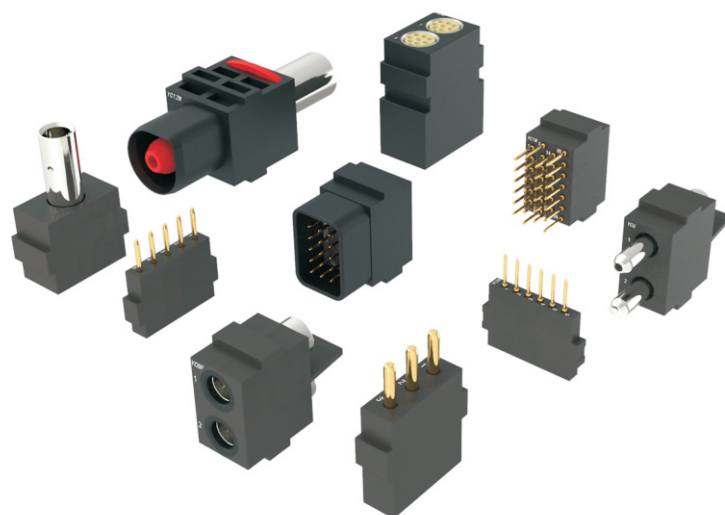


### Characteristics

- Meet American standard finger protection, the anti-touch protection reaches IP2XB level.
- MultiTac connector can provide customized solutions according to customer needs.
- Strong oil resistance, impact resistance and shock resistance.
- The product can be installed in a floating way with big tolerance.
- Module position reconfiguration is quick and convenient.
- Parts are easy to disassemble and replace.
- The product supports any combination of power supply, signal, RJ45, optical fiber module POF/GOF, thermocouple module, gas and liquid module.

### Applications

- Railway battery connector system.
- Laboratory test equipment and test bench, automatic production line equipment.
- Robot.
- High voltage distribution.
- Commercial and domestic energy storage systems.
- Industrial field.



# MultiTac Connector

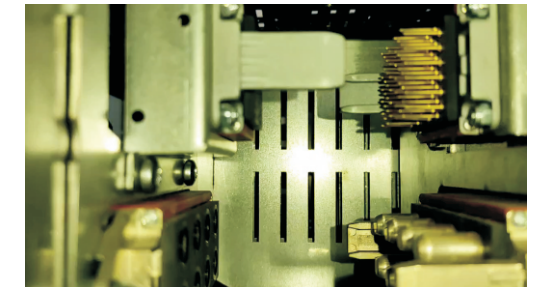
## MultiTac Modular Connector

MultiTac modular connector is widely used in industrial field. The connector can connect various connection types, such as power supply, Signal, data, thermocouple, coaxial, optical fiber, pneumatic and fluid are integrated in a compact frame or shell. MultiTac connector is a rational choice for multi-functional application, saving space, high current carrying capacity and long life cycle, which can ensure a lasting and stable connection under the most severe mechanical and environmental conditions. MultiTac can be applied to all kinds of machinery and equipment, including automobile manufacturing industry, including robots, experimental test equipment and test benches, automatic generation equipment, railway battery connection systems and other industrial fields.

### Application in energy storage field

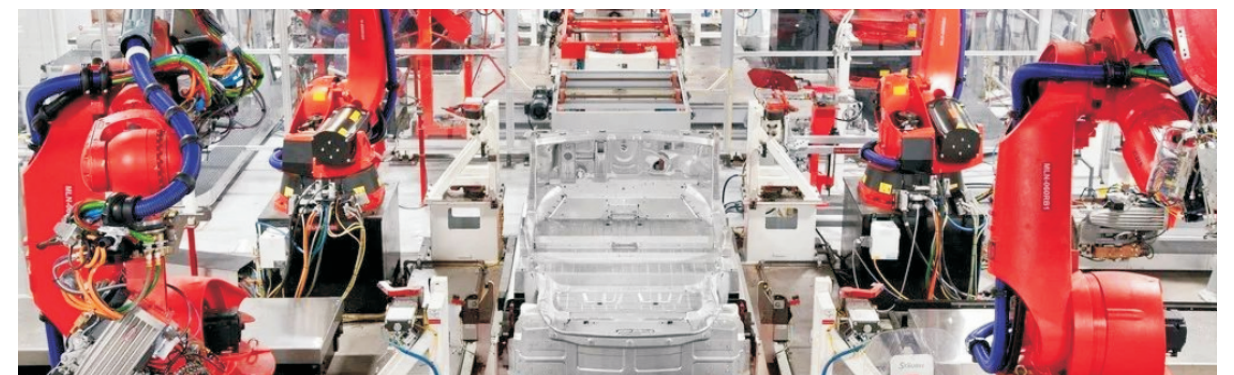
MultiTac modular connector is a rack-mounted solution for connecting battery modules to energy storage cabinet equipment.

- The connection is durable and reliable
- Floating installation, calibrate deviation automatically
- Ideal solution for high impact environment
- Total solution including cable assembly



### Application in automation field

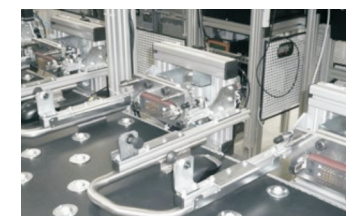
With the increasing demand for efficiency and productivity in automobile manufacturing industry, MultiTac has become the best choice for lasting and stability in harsh industrial environment because of its durable and durable connection characteristics. MultiTac can be applied to mechanical equipment, test and measurement equipment, etc. in automobile manufacturing industry. Reliable and safe connection of power supply, signal and data can be realized through a single modular connector system.



### Automatic test line

MultiTac modular connector can ensure that the automatic production test line runs continuously for a long time.

- High-end components to ensure accurate test results
- Floating installation, calibrate deviation automatically
- Ideal solution for high impact environment
- Durability cycle can reach 100,000 times



### Testing equipment

Reliable connection between the test bench and the tested automobile electronic equipment ensures quick and safe connection and disconnection.

- All-in-one solution to save space
- The maximum power can be 300A, 5KV
- Total solution including cable assembly

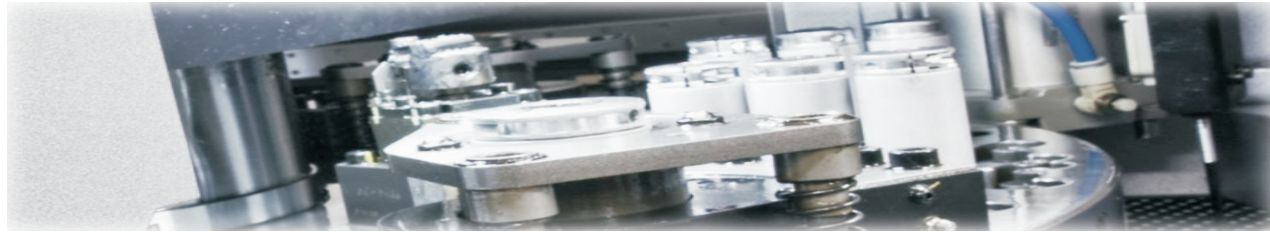




# MultiTac Connector

## Application in mechanical field

With the increasing demand for function and modularity of large machinery in modern manufacturing, it is necessary to have a power supply, signal, data transmission, and can realize some fast switching connectors. MultiTac is very suitable for applications that require high quality and durability of connectors, such as tool quick change devices, automatic presses, packaging and sealing machines, power supply and control power supply, and welding machines. At high vibration and stable and lasting connection can still be ensured under the conditions of high insertion force and high insertion force.



### AGV Vehicle

MultiTac modular connector is used to connect AGV vehicle to charging equipment

- Floating installation, calibrate deviation automatically
- Ideal solution for high impact environment
- Durability cycle can reach 100,000 times



### Miller Machine

MultiTac modular connector is used for host connection between the main machine and spindle heads of multi-functional milling machine.

- High quality solution for high performance application
- Strong impact resistance and shock resistance
- Durability cycle can reach 100,000 times



## Application in railway industry

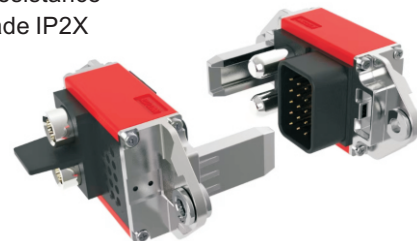


MultiTac meets the strict standards of the railway industry and is very suitable for railway rolling stock. MultiTac can be used to connect charging power supply, power converter, ventilation equipment, air conditioning system, lighting and signal system.

### Battery Pack

MultiTac is applied to the battery pack of rail vehicles

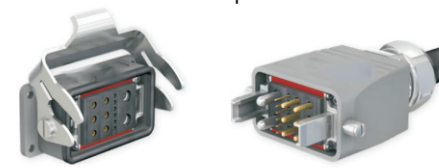
- Meet the railway standard of EN45545-2 and EN 50124-1
- Impact resistance, vibration resistance and high temperature resistance
- Protection grade IP2X



### Power converter, ventilation equipment, air conditioning system, lighting and signal system

Combined with different housings, MultiTac can be used in various applications in railway industry

- Reliable, safe and stable connection
- Special DIN shell, with top and side entry modes
- The dimension specification is flexible and can meet the customization requirements of customers.



# MultiTac Connector

## Application in aerospace and national defense fields

MultiTac can be applied to aerospace and national defense test equipment, such as embedded equipment such as aircraft engine test bed, multimedia equipment and power distribution device. MultiTac is durable, safe and reliable, which is very suitable for applications that require high connection strength, such as land system power distribution in national defense field.

A rack/blind plug connection in a structure or a power electronics module (PEM) such as a converter.

### Battery Pack

MultiTac modular connector can be used in on-board battery system of military vehicles

- Integrated solution in limited space
- High connection density
- Safely and quickly plugged and unplugged
- Ideal solution for high impact and high vibration environment



### Power distribution

MultiTac modular connector is used for the connection between the main distribution line and the vehicle-mounted LRU equipment (converter, rectifier)

- Designed to meet the electrical requirements of the next generation aircraft
- Strong shock resistance, impact resistance and high temperature resistance



## Application in electric vehicles and electric motorcycles fields

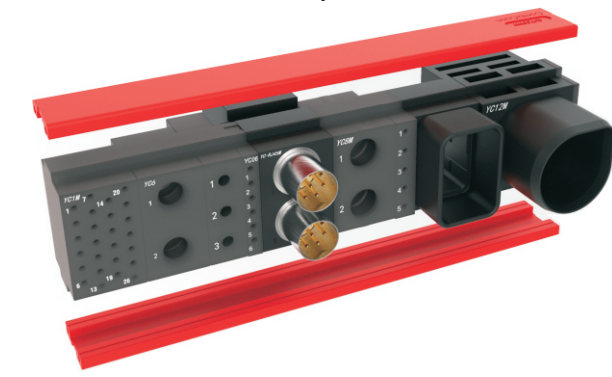
With the in-depth application of electrification in the field of transportation, both electric vehicles and electric motorcycles need more reliable, extensible and quickly replaceable battery connection systems, MultiTac modular connectors are particularly suitable for the application scenarios of power exchange.

- Floating installation, calibrate deviation automatically
- Ideal solution for high vibration environment
- Durability cycle can reach 100,000 times



## Customized application

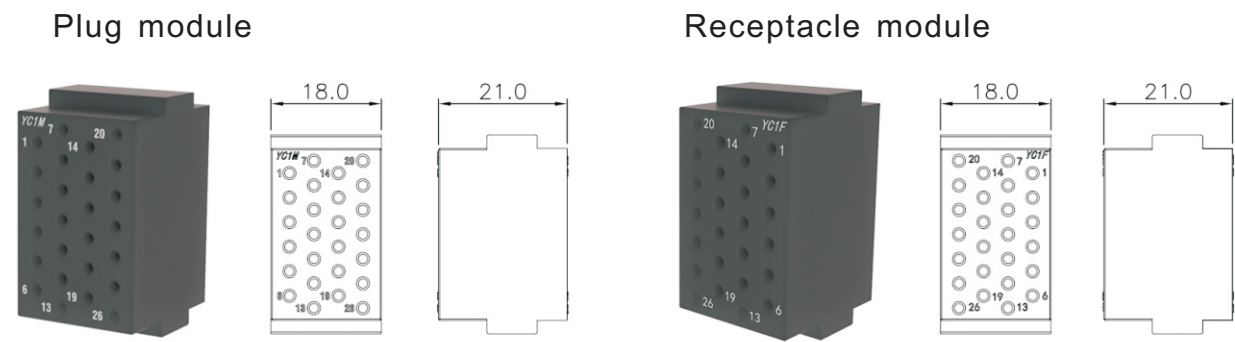
MultiTac modular connector can be 100% customized to meet your customization needs accurately



# MultiTac Connector

## φ 1mm up to 12A signal module

The 26 cores block made of elastic plastic has different plug and receptacle designs



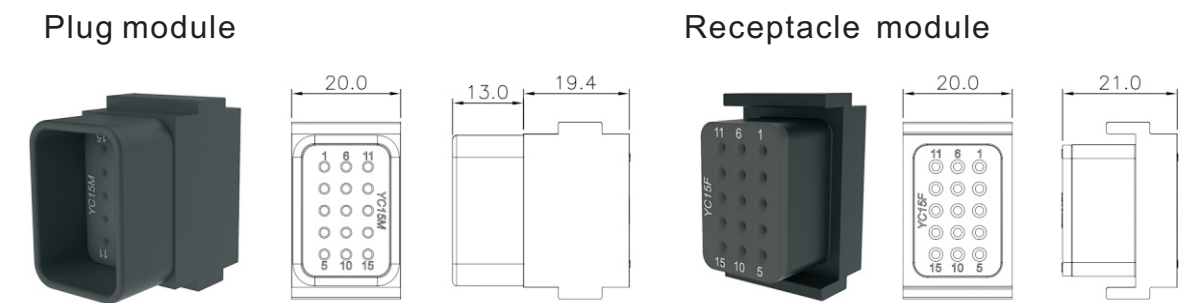
Order	Part Number	Part Name
YC26M	YC26M-P001	Plug module
YC26F	YC26F-P001	Receptacle module

Technical Parameter		
Pin Number	26 pins	
Contact Diameter	φ1mm	
Pollution Level / Overvoltage Level	2 / CATII	3 / CATIII
Voltage Rating	300V AC/DC	150V AC/DC
Maximum solder temperature	260℃	
Maximum solder time	3 seconds	
Durability Cycles	100,000 times	
Protection Level	IP2X	
Clearance and creepage distance	IEC60664-1	
Limit temp.(IEC 61984), Max. Temp./Min. Temp.	+90℃~-40℃	
Block material	EPTR	
Vibration	4.2g/5~250Hz(IEC61373:2010) 10g/10~500Hz(IEC60068-2-6)	
Shock	30g/18ms(IEC61373:2010)	

# MultiTac Connector

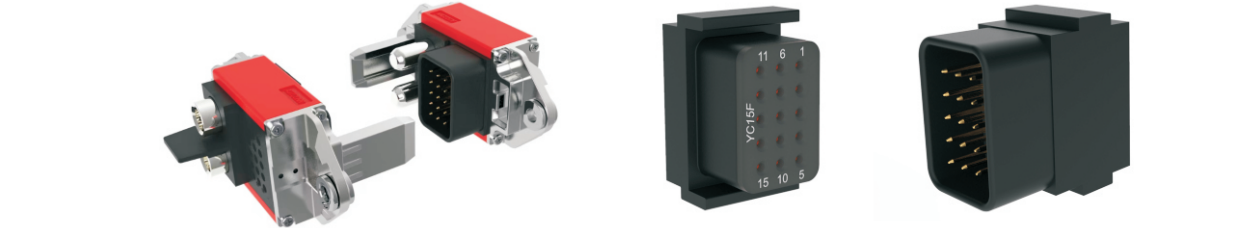
## φ 1mm up to 12A signal module

The 15 cores block made of elastic plastic has different plug and receptacle designs



Order	Part Number	Part Name
YC15M	YC15M-P001	Plug module
YC15F	YC15F-P001	Receptacle module

Technical Parameter		
Pin Number	15 pins	
Contact Diameter	φ1mm	
Pollution Level / Overvoltage Level	2 / CATII	3 / CATIII
Voltage Rating	300V AC/DC	150V AC/DC
Maximum solder temperature	260℃	
Maximum solder time	3 seconds	
Durability Cycles	100,000 times	
Protection Level	IP2X	
Clearance and creepage distance	IEC60664-1	
Limit temp.(IEC 61984), Max. Temp./Min. Temp.	+90℃~-40℃	
Block material	PA & EPTR	
Vibration	4.2g/5~250Hz(IEC61373:2010) 10g/10~500Hz(IEC60068-2-6)	
Shock	30g/18ms(IEC61373:2010)	

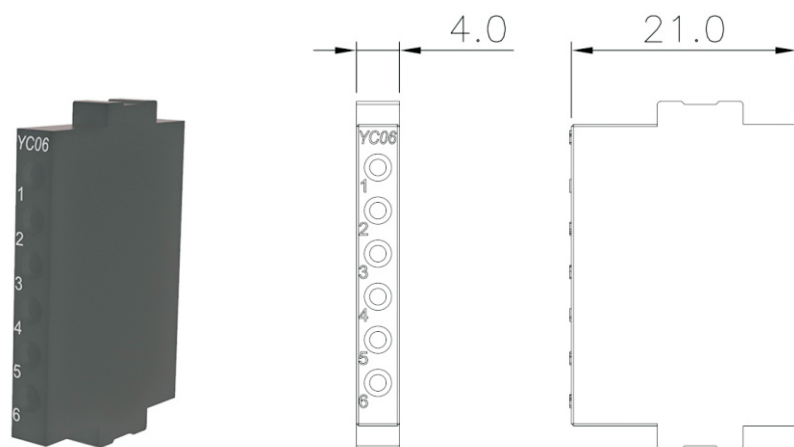




# MultiTac Connector

## ϕ1mm up to 12A signal module

The 6 cores block made of elastic plastic has same plug and receptacle designs



Order	Part Number	Part Name
YC06	YC06-P001	module

Technical Parameter		
Pin Number	6 pins	
Contact Diameter	ϕ1mm	
Pollution Level / Overvoltage Level	2/CATII	3/CATIII
Voltage Rating	300V AC/DC	150V AC/DC
Maximum solder temperature	260℃	
Maximum solder time	3 seconds	
Durability Cycles	100,000 times	
Protection Level	IP2X	
Clearance and creepage distance	IEC60664-1	
Limit temp.(IEC 61984), Max. Temp./Min. Temp.	+90℃~-40℃	
Block material	EPTR	
Vibration	4.2g/5~250Hz(IEC61373:2010) 10g/10~500Hz(IEC60068-2-6)	
Shock	30g/18ms(IEC61373:2010)	

# MultiTac Connector

## ϕ1mm up to 12A contact

Use for module YC26M/YC26F/YC15M/YC15M/YC06

Contact type : ■ Crimping connection for copper wires ■ PCB solder



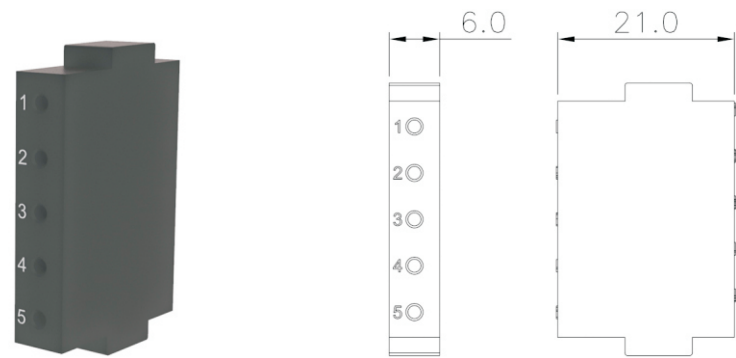
Part Number	Terminal	module	Plating	Cable		Current A	Contact Type
				mm²	AWG		
YC1C12F	crimp female contact	receptacle module	Gold	0.25 0.5 0.75	24 20 18	2 3 5	
YC1C12M	crimp male contact	plug module	Gold	0.25 0.5 0.75	24 20 18	2 3 5	
YC1C12ML	crimp long male contact	plug module	Gold	0.25 0.5 0.75	24 20 18	2 3 5	
YC1C12FS	solder female contact	receptacle module	Gold	/	/	5	
YC1C12MS	solder male contact	plug module	Gold	/	/	5	
YC1C12MLS	solder long male contact	plug module	Gold	/	/	5	
YC1C12D	stopper	receptacle/ plug module	/	/	/	/	



# MultiTac Connector

## φ1.5mm up to 19A signal module

The 5 cores block made of elastic plastic has same plug and receptacle designs



Order	Part Number	Part Name
YC 05	YC05-P001	module

Technical Parameter		
Pin Number	5 pins	
Contact Diameter	φ1.5mm	
Pollution Level / Overvoltage Level	2/CATII	3/CATIII
Voltage Rating	600V AC/DC	250V AC/DC
Maximum solder temperature	260℃	
Maximum solder time	3 seconds	
Durability Cycles	100,000 times	
Protection Level	IP2X	
Clearance and creepage distance	IEC60664-1	
Limit temp.(IEC 61984), Max. Temp./Min. Temp.	+90℃~-40℃	
Block material	EPTR	
Vibration	4.2g/5~250Hz(IEC61373:2010) 10g/10~500Hz(IEC60068-2-6)	
Shock	30g/18ms(IEC61373:2010)	

# MultiTac Connector

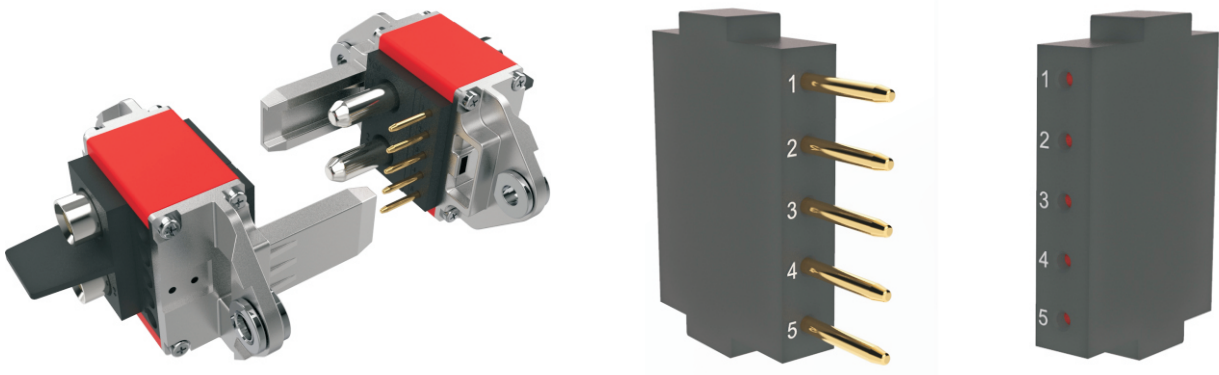
## φ1.5mm up to 19A contact

Use for module YC5

Contact Type: ■ Crimping connection for copper wires ■ PCB solder



Part Number	Terminal	Plating	Cable		Current A	Contact Type
			mm <sup>2</sup>	AWG		
YC15C19F	crimp female contact	Gold	0.5 0.75 1.0 1.5	20 18 18 16	5 8 10 10	
YC15C19M	crimp male contact	Gold	0.5 0.75 1.0 1.5	20 28 18 16	5 8 10 10	
YC15C19ML	crimp long male contact	Gold	0.5 0.75 1.0 1.5	20 18 18 16	5 8 10 10	
YC15C19FS	solder female contact	Gold	/	/	10	
YC15C19MS	solder male contact	Gold	/	/	10	
YC15C19MLS	solder long male contact	Gold	/	/	10	
YC15C19D	stopper	/	/	/	/	

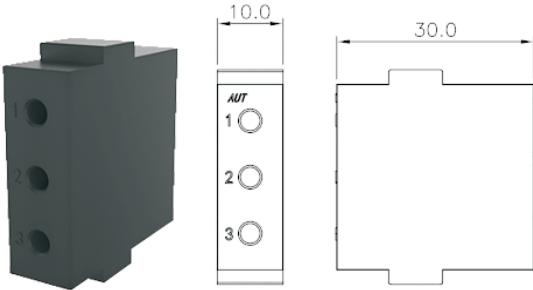


# MultiTac Connector

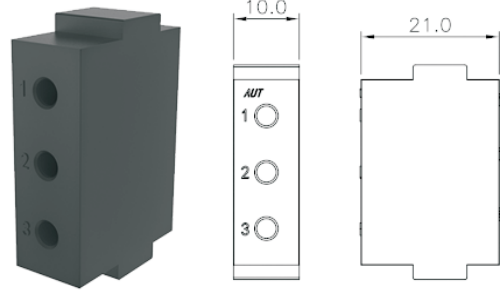
## ϕ3mm up to 40A power module

The 3 cores block made of elastic plastic has same plug and receptacle designs

crimping module



solder module



Order	Part Number	Part Name
YC3	YC3-P001	crimping module
YC3-PCB	YC3-P002	solder module

Technical Parameter		
Pin Number	3 pins	
Contact Diameter	ϕ3mm	
Pollution Level / Overvoltage Level	2/CATII	3/CATIII
Voltage Rating	1000V AC/DC	400V AC/DC
Maximum solder temperature	260℃	
Maximum solder time	3 seconds	
Durability Cycles	100,000 times	
Protection Level	IP2X	
Clearance and creepage distance	IEC60664-1	
Limit temp.(IEC 61984), Max. Temp./Min. Temp.	+90℃~-40℃	
Block material	EPTR	
Vibration	4.2g/5~250Hz(IEC61373:2010) 10g/10~500Hz(IEC60068-2-6)	
Shock	30g/18ms(IEC61373:2010)	

# MultiTac Connector

## ϕ3.0mm up to 40A contact

Use for module YC3

Contact Type: ■ Crimping connection for copper wires ■ PCB solder



Part Number	Terminal	Plating	Cable		Current A	Contact Type
			mm <sup>2</sup>	AWG		
YC3C40F	crimp female contact	Gold	2.5 4	14 12	22 35	
YC3C40M	crimp male contact	Gold	2.5 4	14 12	22 35	
YC3C40ML	crimp male contact	Gold	2.5 4	14 12	22 35	
YC3C40FS	soler female contact	Gold	/	/	35	
YC3C40MS	solder male contact	Gold	/	/	35	
YC3C40MS	solder long male contact	Gold	/	/	35	
YC3C40D	Stopper	/	/	/	/	

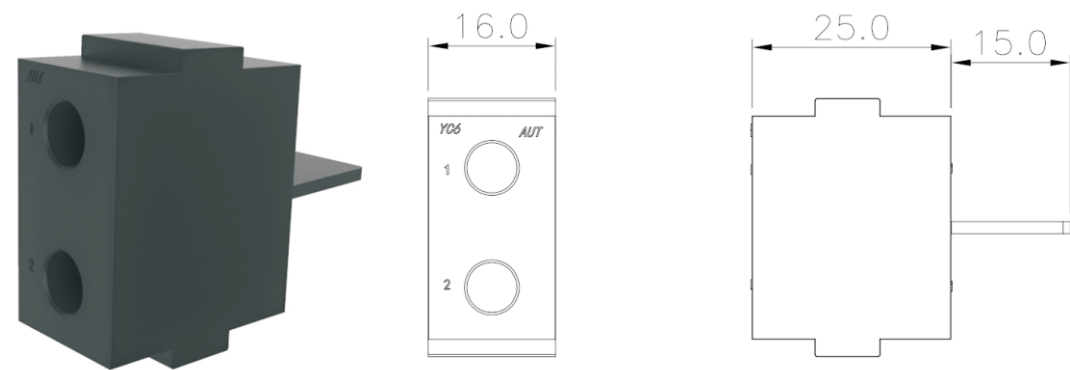




# MultiTac Connector

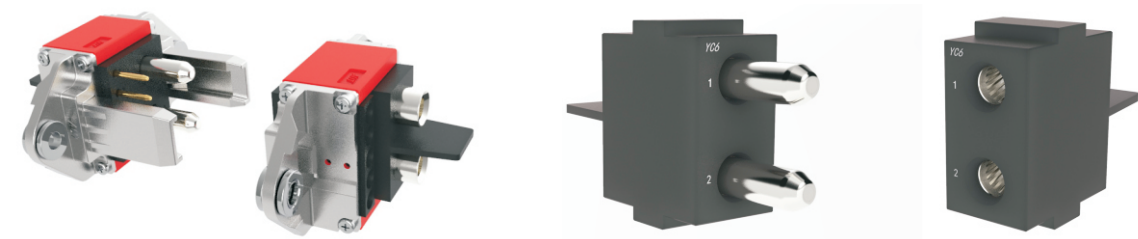
## φ6mm up to 120A power module

The 2 cores block made of elastic plastic has same plug and receptacle designs



Order	Part Number	Part Name
YC6	YC6-P001	module

Technical Parameter		
Pin Number	2 pins	
Contact Diameter	φ6mm	
Pollution Level / Overvoltage Level	2/CATII	3/CATIII
Voltage Rating crimp contact threaded contact	1000V AC/DC 600 V AC/DC	500 V AC/DC 300 V AC/DC
Durability Cycles	100,000 times	
Protection Level	IP2X	
Clearance and creepage distance	IEC60664-1	
Limit temp.(IEC 61984), Max. Temp./Min. Temp.	+90℃~-40℃	
Block material	EPTR	
Vibration	4.2g/5~250Hz(IEC61373:2010) 10g/10~500Hz(IEC60068-2-6)	
Shock	30g/18ms(IEC61373:2010)	



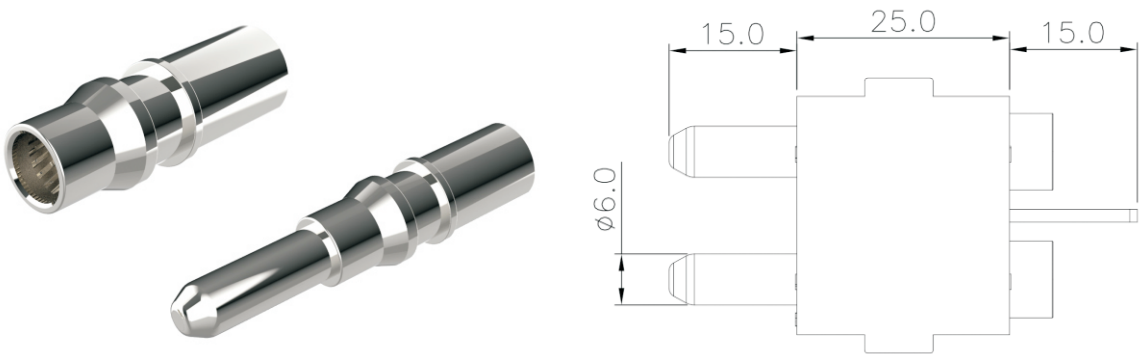
# MultiTac Connector

## φ6.0mm up to 120A contact

Use for module YC6

Contact Type: ■ Crimping connection for copper wires

■ Threaded connection of cable terminal, with M5 internal thread and external thread

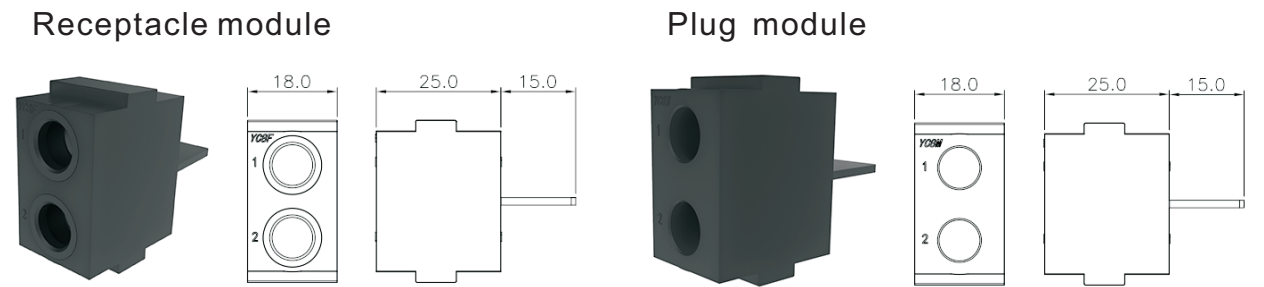


Part Number	Terminal	Plating	Cable		Current A	Contact Type
			mm <sup>2</sup>	AWG		
YC6C120F-6	crimp female contact	Silver	6	10	40	
YC6C120M-6	crimp male contact	Silver				
YC6C120F-10	crimp female contact	Silver	10	8	55	
YC6C120M-10	crimp male contact	Silver				
YC6C120F-16	crimp female contact	Silver	16	6	75	
YC6C120M-16	crimp male contact	Silver				
YC6C120F-M5	internal thread female contact	Silver	6 10 16 25	10 8 6 4	40 55 75 100	
YC6C120M-M5	internal thread male contact	Silver	6 10 16 25	10 8 6 4	40 55 75 100	
YC6C120F-M5A	external thread female contact	Silver	6 10 16 25	10 8 6 4	40 55 75 100	
YC6C120M-M5A	external thread male contact	Silver	6 10 16 25	10 8 6 4	40 55 75 100	
YC6C120D	stopper	/	/	/	/	

# MultiTac Connector

## ϕ8mm up to 150A power module

The 2 cores block made of elastic plastic has different plug and receptacle designs



Order	Part Number	Part Name
YC8M	YC8M-P001	Plug module
YC8F	YC8F-P001	Receptacle module

Technical Parameter		
Pin Number	2 pins	
Contact Diameter	ϕ8mm	
Pollution Level / Overvoltage Level	2/CATII	3/CATIII
Voltage Rating: crimp contact	1000V AC/DC	300 V AC/DC
threaded contact	600 V AC/DC	300 V AC/DC
Durability Cycles	100,000 times	
Protection Level	IP2X	
Clearance and creepage distance	IEC60664-1	
Limit temp.(IEC 61984), Max. Temp./Min. Temp.	+90℃~-40℃	
Block material	EPTR	
Vibration	4.2g/5~250Hz(IEC61373:2010) 10g/10~500Hz(IEC60068-2-6)	
Shock	30g/18ms(IEC61373:2010)	

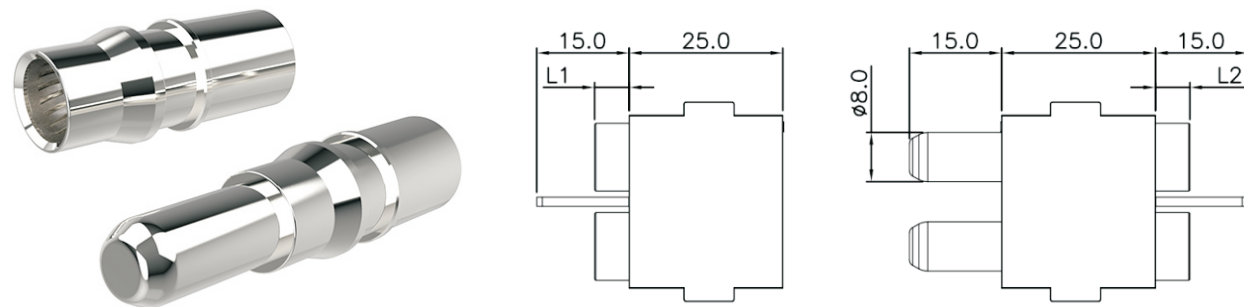


# MultiTac Connector

## ϕ8.0mm up to 150A contact

Use for module YC8M/YC8F

- Contact Type:
- Crimping connection for copper wires
  - Threaded connection of cable terminal, with M6 internal thread and external thread



Part Number	Terminal	Plating	Cable		Current A	Contact Type
			mm²	AWG		
YC8C150F-10	crimp female contact	Silver	10	8	55	
YC8C150M-10	crimp male contact	Silver				
YC8C150F-16	crimp female contact	Silver	16	6	75	
YC8C150M-16	crimp male contact	Silver				
YC8C150F-25	crimp female contact	Silver	25	4	100	
YC8C150M-25	crimp male contact	Silver				
YC8C150F-35	crimp female contact	Silver	35	2	120/150	
YC8C150M-35	crimp male contact	Silver				
YC8C150F-M6	internal thread female contact	Silver	10 16 25 35	8 6 4 2	55 75 100 120	
YC8C150M-M6	internal thread male contact	Silver	10 16 25 35	8 6 4 2	55 75 100 120	
YC8C150F-M6A	external thread female contact	Silver	10 16 25 35	8 6 4 2	55 75 100 120	
YC8C150M-M6A	external thread male contact	Silver	10 16 25 35	8 6 4 2	55 75 100 120	
YC8C150D	stopper	/	/	/	/	

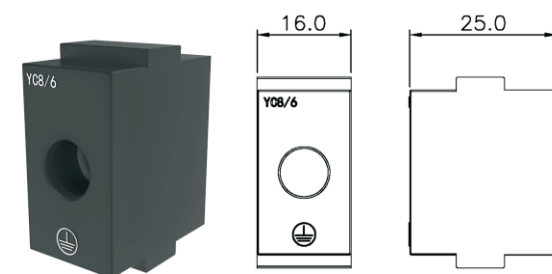


## MultiTac Connector

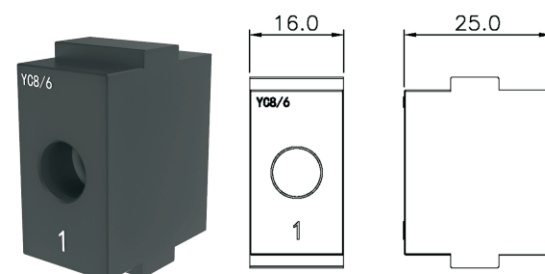
### φ6 and φ8mm up to 125A,150A ground protection module


The single cores block made of elastic plastic has same plug and receptacle designs

module with 



module with number “1”



Order	Part Number	Part Name
YC86PE	YC86-PE001	module with 
YC861	YC86-P001	module with number “1”

Technical Parameter		
Pin Number	1 pin	
Contact Diameter	φ8mm/φ6mm	
Pollution Level / Overvoltage Level	2/CATII	3/CATIII
Voltage Rating: crimp contact threaded contact	1000V AC/DC 600 V AC/DC	400 V AC/DC 300 V AC/DC
Durability Cycles	100,000 times	
Protection Level	IP2X	
Clearance and creepage distance	IEC60664-1	
Limit temp.(IEC 61984), Max. Temp./Min. Temp.	+90℃~-40℃	
Block material	EPTR	
Vibration	4.2g/5~250Hz(IEC61373:2010) 10g/10~500Hz(IEC60068-2-6)	
Shock	30g/18ms(IEC61373:2010)	



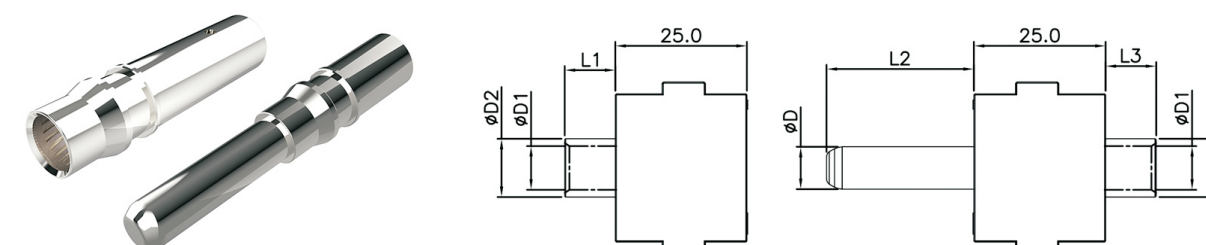
## MultiTac Connector




### Pre-contacted φ6.0 and φ8.0mm contacts

Use for module YC86PE /YC86PE1

Contact Type: ■ Crimping connection for copper wires

■ Threaded connection of cable terminal, with internal thread and external thread

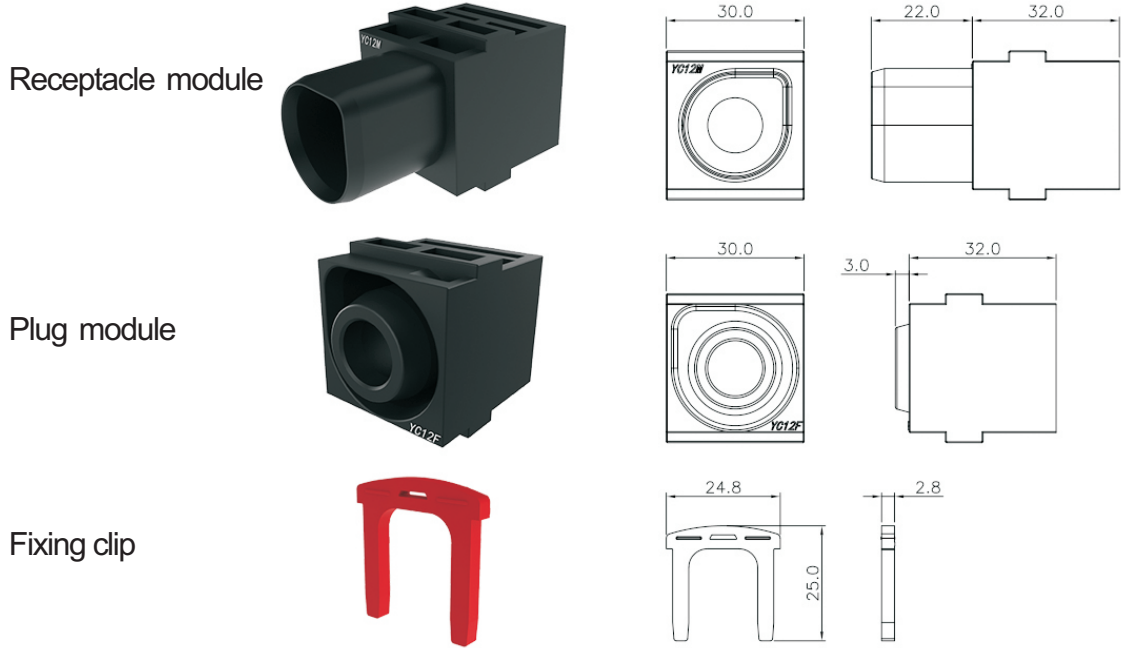


Part Number	Terminal	Plating	Cable		Current KA/3S	Contact Type
			mm <sup>2</sup>	AWG		
YC8PELCF-25	long crimp female contact	Silver	25	4	1.3	L1=24, D=8, D1=8, D2=11
YC8PELCM-25	long crimp male contact	Silver	25	4	1.3	L2=28, L3=9, D=8, D1=8, D2=11
YC8PELCF-35	long crimp female contact	Silver	35	2	1.6	L1=30, D=8, D1=8, D2=11
YC8PELCM-35	long crimp male contact	Silver	35	2	1.6	L2=28, L3=9, D=8, D1=8, D2=11
YC8PELCF-50	long crimp female contact	Silver	50	1/0	1.6	L1=32, D=8, D1=11, D2=14.5
YC8PELCM-50	long crimp male contact	Silver	50	1/0	1.6	L2=28, L3=26, D=8, D1=11, D2=14.5
YC8PELCF-M8A	external thread long female contact	Silver	25 35 50	4 2 1/0	1.3 1.6 1.6	
YC8PELCM-M8A	external thread long male contact	Silver				
YC6PECF-16	crimp female contact	Silver	16	6	0.86	L1=11, D=6, D1=6, D2=9
YC6PECM-16	crimp male contact	Silver	16	6	0.86	L2=21, L3=3.5, D=6, D1=6, D2=9
YC6PECF-M5A	external thread female contact	Silver	6 10 16 25	10 8 6 4	0.32 0.54 0.86 1.6	
YC6PECM-M5A	external thread male contact	Silver				
YC8PECF-25	crimp female contact	Silver	25	4	1.3	L1=11, D=6, D1=8, D2=11
YC8PECM-25	crimp male contact	Silver	25	4	1.3	L2=21, L3=3.5, D=8, D1=8, D2=11
YC8PECF-M6A	external thread female contact	Silver	10 16 25 35	8 6 4 2	0.54 0.86 1.3 1.6	
YC8PECM-M6A	external thread male contact	Silver				
YSC25-8	cable terminal	/	25	4	1.3	
YSC35-8	cable terminal	/	35	2	1.6	
YSC50-8	cable terminal	/	50	1/0	1.6	
YSC35-6	cable terminal	/	35	2	1.6	

# MultiTac Connector

## φ 12mm up to 300A power module

Single core plastic block, receptacle and plug have different design.  
Both receptacle and plug terminal are locked by fixing clips.



Order	Part Number	Part Name
YC12F	YC12F-P001	Receptacle module
YC12M	YC12M-P001	Plug module
YC12	YC12-P002	Fixing clip

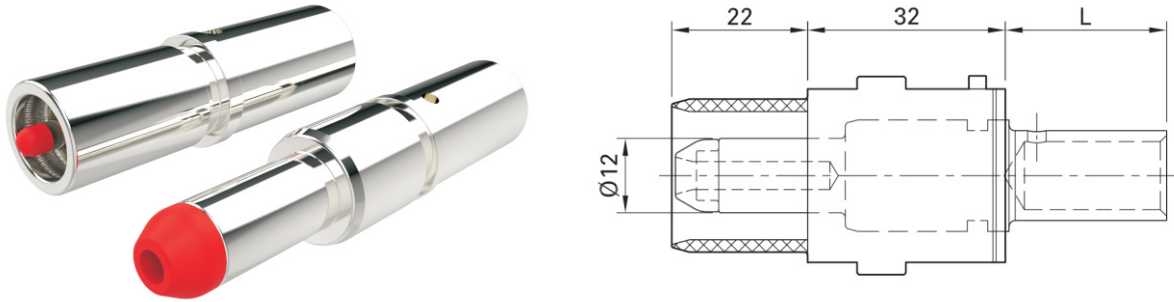
Technical Parameter		
Pin Number	1 pin	
Contact Diameter	φ12mm	
Pollution Level / Overvoltage Level	2/CATII	3/CATIII
Voltage Rating: crimp contact threaded contact	1000V AC/DC	800 V AC/DC 400 V AC/DC
Durability Cycles	100,000 times	
Protection Level	IP2X	
Clearance and creepage distance	IEC60664-1	
Limit temp.(IEC 61984), Max. Temp./Min. Temp.	+125℃~-55℃	
Block material	PA	

# MultiTac Connector

## φ 12.0mm up to 300A contact

Use for module YC12M/YC12F

- Contact Type: ■ Crimping connection for copper wires  
■ Threaded connection of cable terminal, with M10 internal thread and external thread



Part Number	Terminal	Plating	Cable		Current A	Contact Type
			mm²	AWG		
YC12C300F-50	crimp female contact	Silver	50	1/0	200	
YC12C300M-50	crimp male contact	Silver				
YC12C300F-70	crimp female contact	Silver	70	2/0	250	
YC12C300M-70	crimp male contact	Silver				
YC12C300F-90	crimp female contact	Silver	90	4/0	300	
YC12C300M-90	crimp male contact	Silver				
YC12C300F-M10	internal thread female contact	Silver	50	1/0	200	
			70	2/0	250	
			95	4/0	300	
YC12C300M-M10	internal thread male contact	Silver	50	1/0	200	
			70	2/0	250	
			95	4/0	300	
YSC50-10	cable terminal	/	50	1/0	200	
YSC70-10	cable terminal	/	70	2/0	250	
YSC95-10	cable terminal	/	95	4/0	300	
YS 001	button-headed screw	/	/	/	/	M10X20 ISO4762 BN610
YS 002	sawtooth washer	/	/	/	/	F/M10 DIN6798A BN781
YS 003	washer	/	/	/	/	U/M10 AG



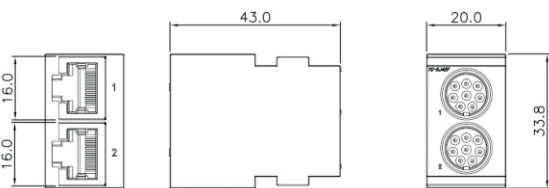
# MultiTac Connector

## 100Mbit RJ45 module

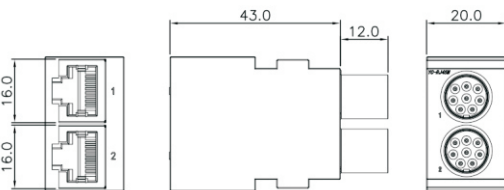
100 Mbit module is used for Ethernet communication, the highest rate can reach 100 Mbit/s (CAT5).

Additional network cables equipped with RJ45 connectors can be directly connected with 100 Mbit modules. The 100 Mbit module is fully assembled and delivered.

### Receptacle module



### Plug module



Order	Part Number	Part Name
YC-RJ45F	YCRJ45F-P001	Receptacle module
YC-RJ45M	YCRJ45M-P001	Plug module

Technical Parameter		
Data transmission	CAT 5 Ethernet IEE802.3,USB2.0	
Durability (RJ45 interface)	5000 times	
Durability (8 pins circular interface)	100,000 times	
Pollution Level / Overvoltage Level	2/CATII	3/CATIII
Voltage test 1 minute, 50/60Hz	500 V AC	
Average force of module	19N	
Limit Temp.(IEC 61984), Max. Temp./Min. Temp.	+90℃~-40℃	
Block material Insulator	PA PEEK	

# MultiTac Connector

## MultiTac frame of exploded parts

The length of the support rail can be customized according to the customer's needs.

Insertion and removal times of guide> 100,000 times.

Guide are specially designed to guide the force of connector and related driving equipment



Order	Part Number	Part Name	
YC	YC-P001	Plastic (PA) support rail	
YC	YC-P001AL	Aluminum support rail	
YC	YC-S001	DIN housing, standard guide for receptacle, without grounding	
YC	YC-S002	DIN housing, standard guide for receptacle, with grounding	
YC	YC-S003	DIN housing, standard guide for plug, without grounding	
YC	YC-S004	DIN housing, standard guide for plug, with grounding	
YC	YC-S005	Standard guide for floating mounting receptacle, without grounding	
YC	YC-S006	Standard guide for floating mounting receptacle, with grounding	
YC	YC-S007	Standard guide for floating mounting plug, without grounding	
YC	YC-S008	Standard guide for floating mounting plug, with grounding	